

MATCH LINE

ROYAL LAKES P.U.D.

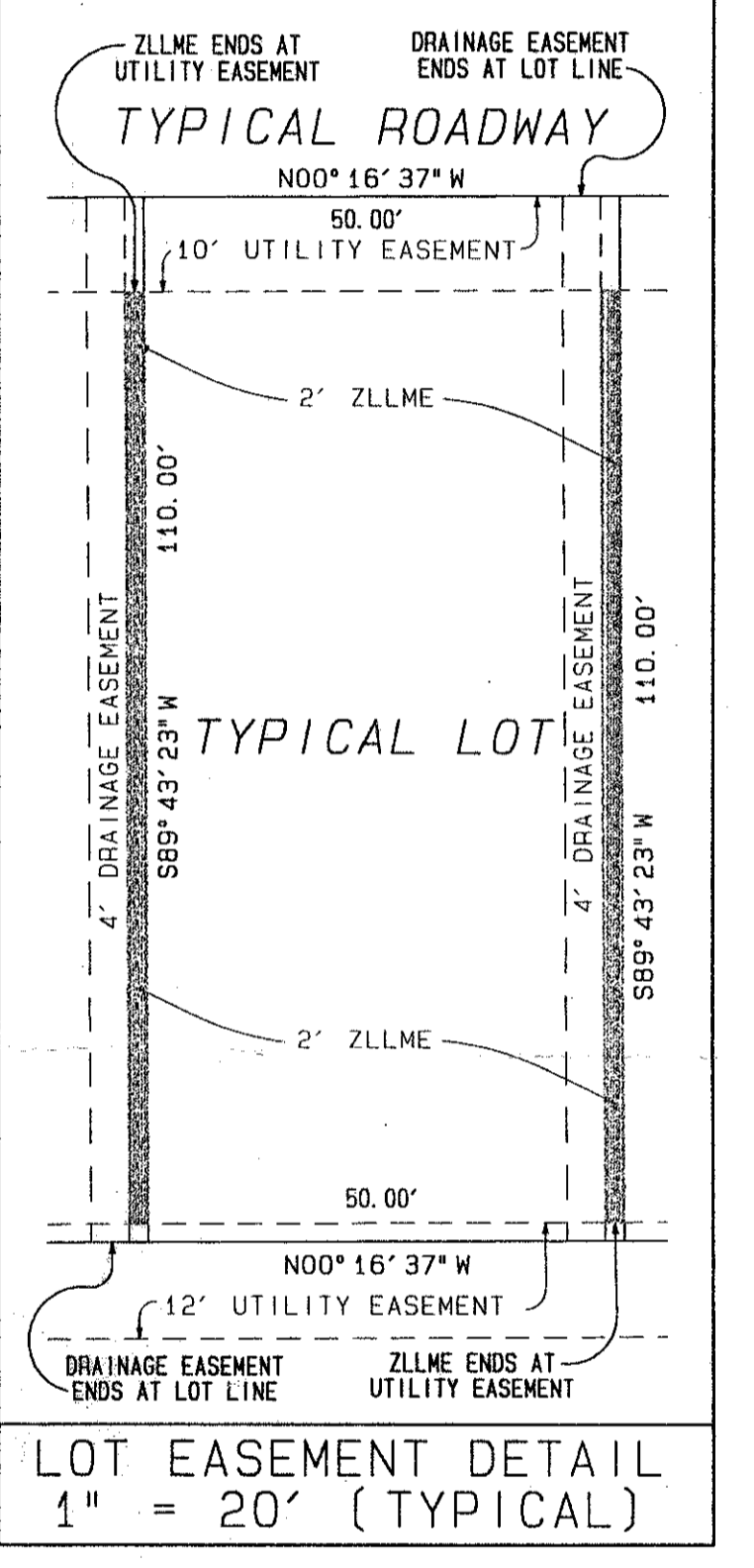
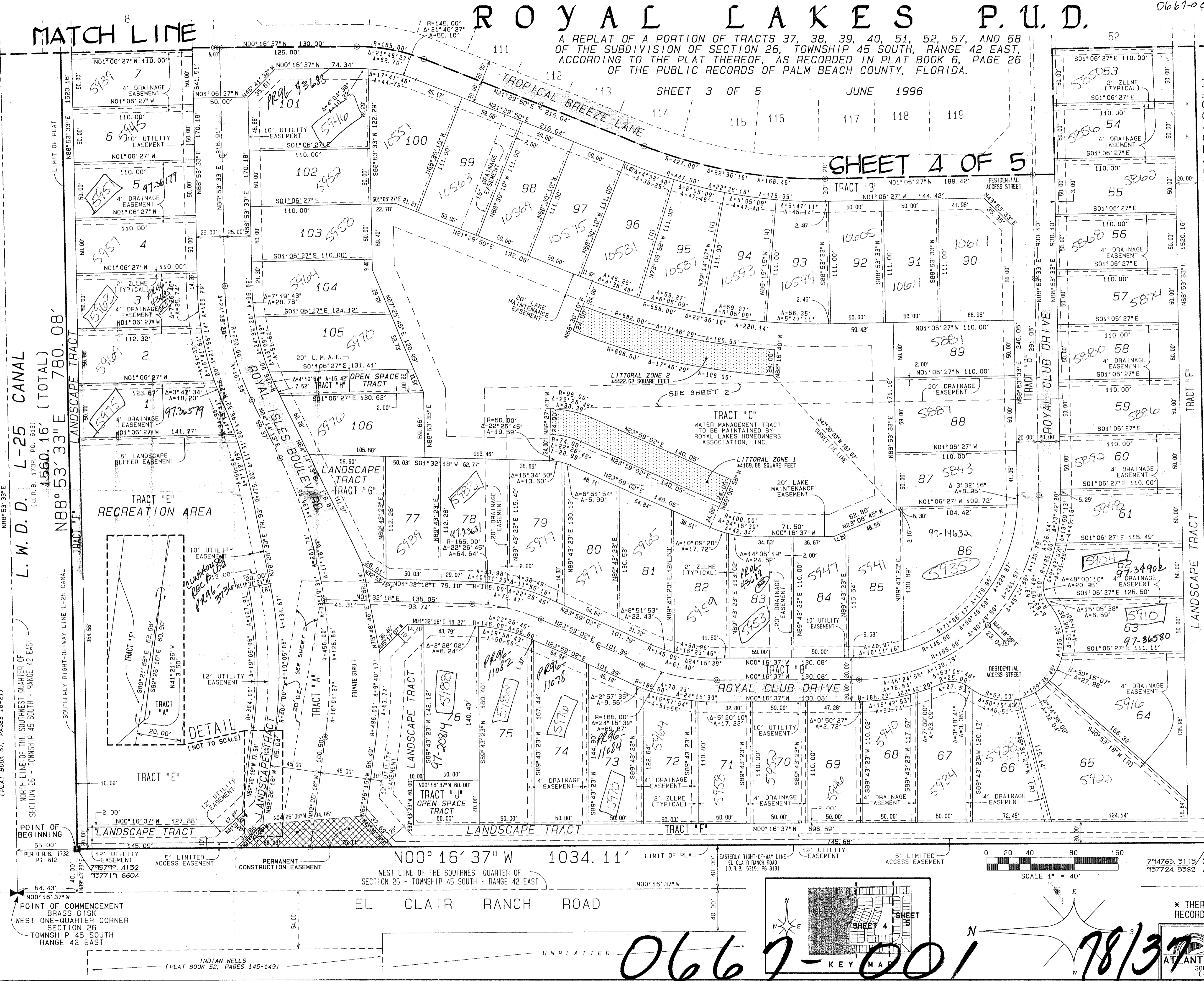
0667-001

A REPLAT OF A PORTION OF TRACTS 37, 38, 39, 40, 51, 52, 57, AND 58 OF THE SUBDIVISION OF SECTION 26, TOWNSHIP 45 SOUTH, RANGE 42 EAST, ACCORDING TO THE PLAT THEREOF, AS RECORDED IN PLAT BOOK 6, PAGE 26 OF THE PUBLIC RECORDS OF PALM BEACH COUNTY, FLORIDA.

SHEET 3 OF 5

SHEET 4 OF 5

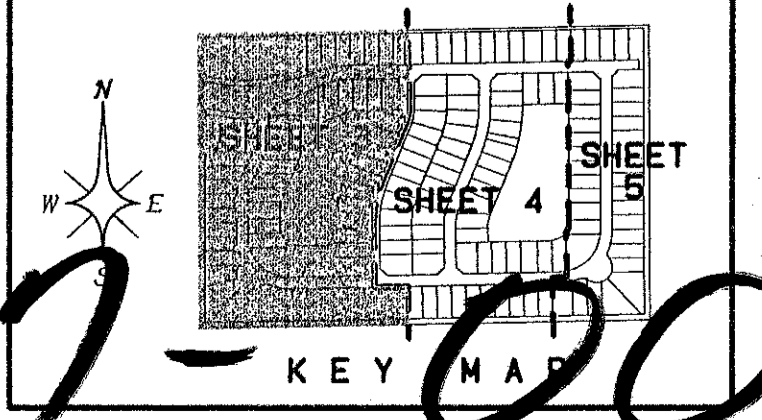
37
PCT. 95-71
CURRENT
NO SCHOOLS
REST. COV.
5/31/91
DOROTHY H. WILKEN, CLERK
CIRCUIT COURT
BY: DC



NORTH LINE
MAJESTIC ISLES - PLAT TWO
PLAT BOOK 77, PAGES 22-28

- LEGEND:
- Δ = CENTRAL ANGLE/Delta
 - CH = CHORD
 - DB = DEED BOOK
 - DE = DRAINAGE EASEMENT
 - FP & L = FLORIDA POWER AND LIGHT COMPANY
 - L = ARC LENGTH
 - L.A.E. = LIMITED ACCESS EASEMENT
 - L.M.A.E. = LAKE MAINTENANCE ACCESS EASEMENT
 - L.M.D.D. = LAKE WORTH DRAINAGE DISTRICT
 - N.R. = NON-RADIAL
 - N.T.S. = NOT TO SCALE
 - O.R.B. = OFFICIAL RECORDS BOOK
 - P.B. = PLAT BOOK
 - P.P. = PAGE
 - P.O.B. = POINT OF BEGINNING
 - P.O.C. = POINT OF COMMENCEMENT
 - R = RADIUS (RADII)
 - R.F. = RADIAL TO FRONT LOT LINE
 - R.R. = RADIAL TO REAR LOT LINE
 - R.W. = RIGHT OF WAY
 - U.C.P. = UTILITY EASEMENT
 - W.C. = WITNESS CORNER
 - ZLLME = ZERO LOT LINE MAINTENANCE EASEMENT
 - ⊙ = PERMANENT CONTROL POINT (PCP)
 - ⊙ = PCP #4380
 - ⊙ = PERMANENT REFERENCE MONUMENT (PRM)
 - ⊙ = SET PRM #4380
 - ⊙ = CENTERLINE

* THERE MAY BE ADDITIONAL RESTRICTIONS OF RECORD WHICH ARE NOT SHOWN ON THIS PLAT *



0667-001

78/37

ATLANTIC - CARIBBEAN MAPPING, INC.
3062 JOG ROAD - GREENACRES, FLORIDA 33467
(407) 964-7884 FAX (407) 964-1969

SUBDIVISION # ROYAL LAKES
BOOK 78
FLOOD ZONE B
QUAD # 35
ZIP CODE 33457
PUD NAME ROYAL LAKES
PUD # 38

TAZ-448
L.W.D.D. L-25 CANAL
1560.16' (TOTAL)
N88°53'33"E 780.08'

RECORDED
8-16-91